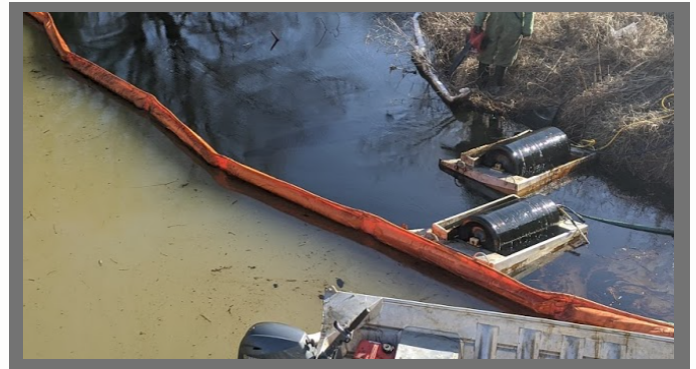




# **CONTRACTOR BOOM**



|  |                               |
|--|-------------------------------|
| Freeboard                                      | 6"                            |
| Draft  | 12"                           |
| Boom Height                                    | 18"                           |
| Standard Length                                | 50'-100'                      |
| End Connectors                                 | ASTM "Z" or Slide             |
| Flotation                                      | Solid ethafoam type flotation |
| Weight   | 1.7 lbs/foot                  |
| Ballast Material                               | 1/4" Galvanized chain         |
| Tension Member Strength (Ballast Chain)        | 5,000 lbs                     |
| Tension Member Strength (Fabric)               | 21,500 lbs                    |
| Tension Member Strength (Top Cable [Optional]) | 9,800 lbs                     |
| Total Strength                                 | 26,500 lbs (36,300 lbs)       |

- ✦ Additional ballast chain sizes available
- ✦ All pinhole locations will be to ASTM standards
- ✦ All seals are Radio Frequency welded
- ✦ Custom log pocket sizes are available
- ✦ All sizes of boom can be manufactured for reel deployment
- ✦ Additional fabric weights available in PVC and Urethane fabric