

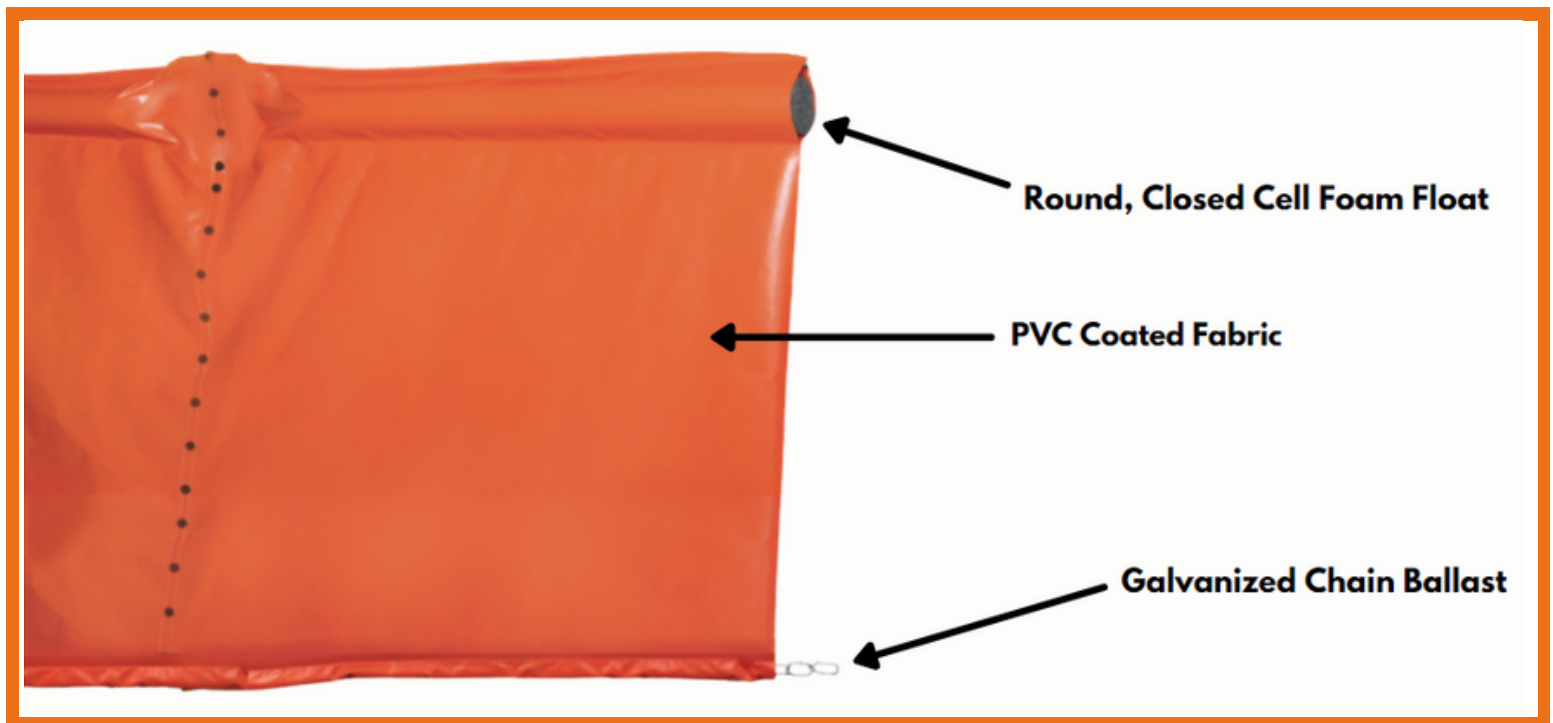
# DOT CURTAIN TYPES



**ACME Environmental Turbidity Barriers and Silt Curtains** are designed to provide proper compliance with the Clean Water Act and the National Pollution Discharge Elimination System (NPDES) requirements. These barriers are considered to be the most efficient method of compliance and we custom manufacture these according to all of our customers' specifications. Our barriers and curtains can be manufactured with both a solid fabric or filter screen skirt in an array of different sizes to fit your next project's exact needs!

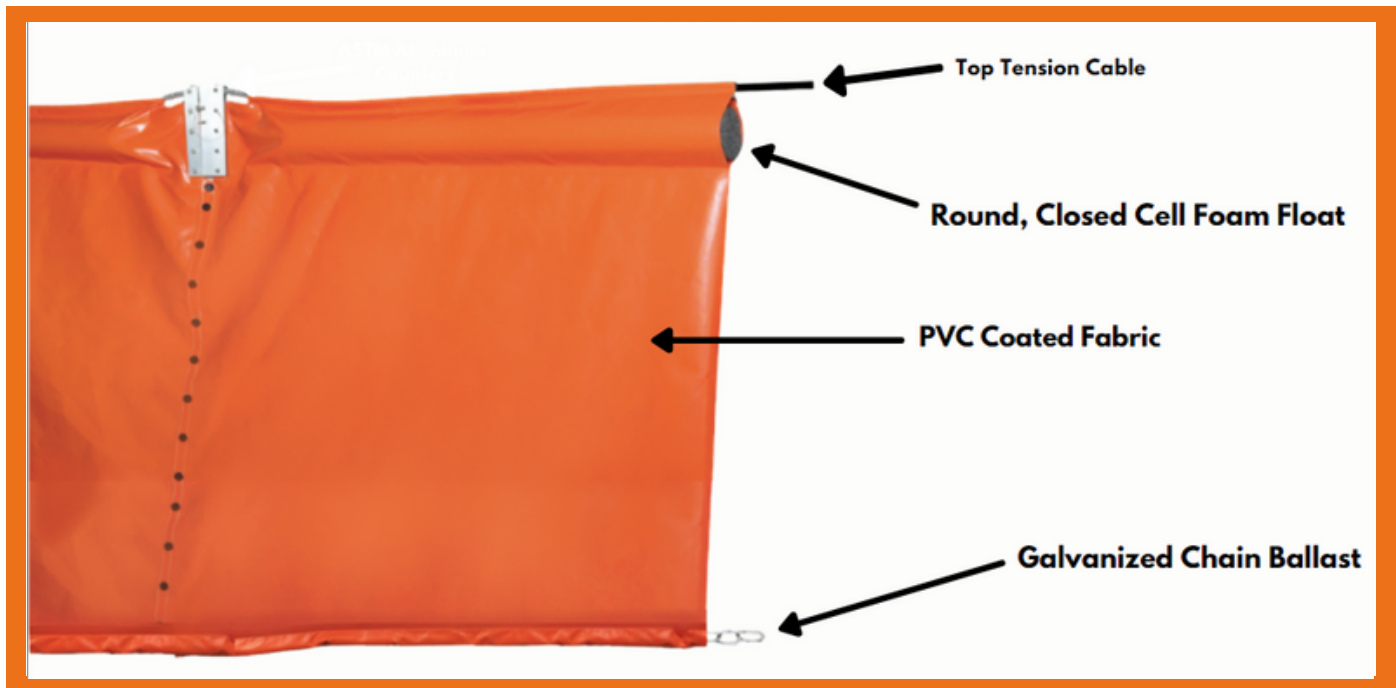
**There are three different types of barriers:**

## TYPE I CURTAIN



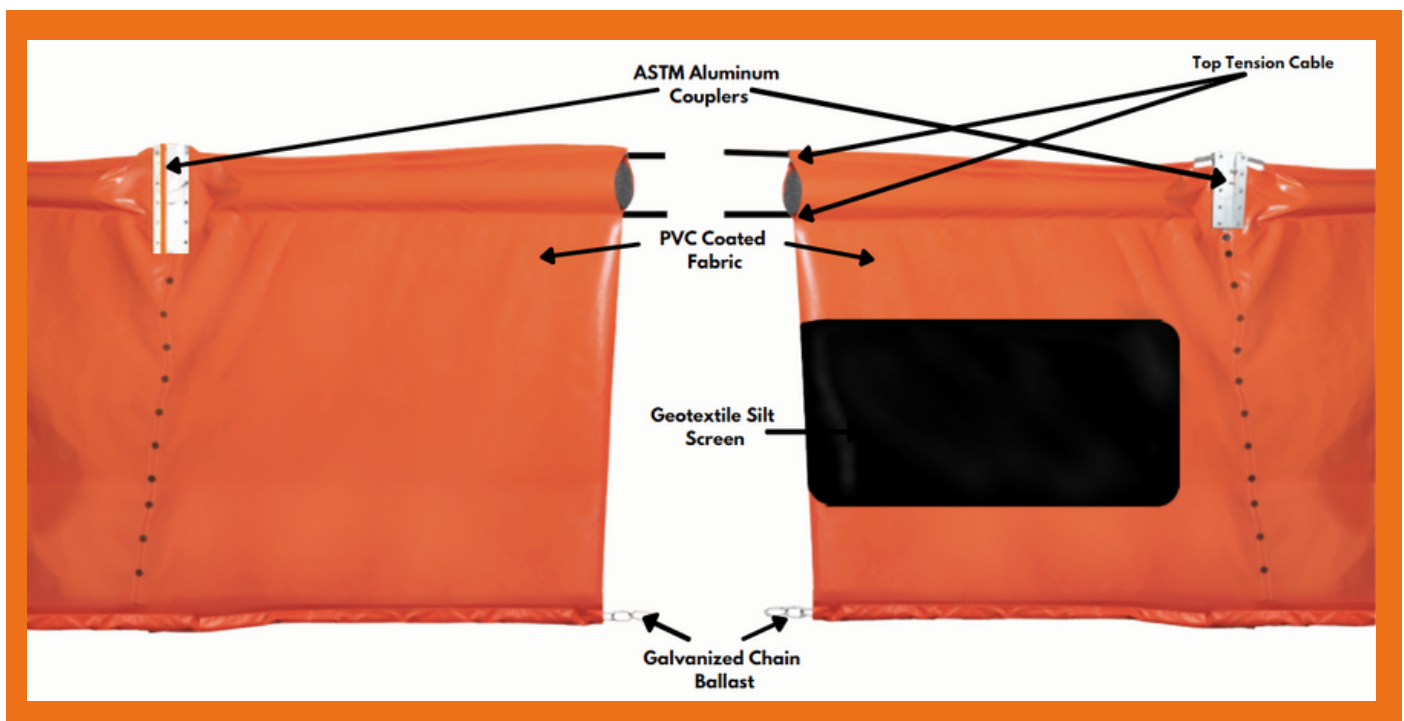
**FOR CALM PROTECTED AREAS, SUCH AS LAKES WITH LITTLE OR NO CURRENT, THE TYPE I IS RECOMMENDED**

## TYPE II CURTAIN



FOR STREAMS AND RIVERS WHERE THE CURRENT IS ONLY ONE-DIRECTIONAL, THE TYPE II IS RECOMMENDED

## TYPE III CURTAIN



FOR TIDAL AREAS WHERE CURRENTS CHANGE DUE TO TIDAL AND WIND ACTION, THE TYPE III IS RECOMMENDED